

INSTRUCTIONS

Assembly order—along the model

CONSTRUCT-A-KIT
**Selly
Manor**

MINI MODEL

YOU WILL NEED—4 1/2 x 9 1/2 inch sheets of sturdy, white, 100% cotton paper and a sharp craft knife.

CONSTRUCT THE MODEL—Using the pieces, enjoy the model before cutting the rest. While making another part, you can pop out when the model is completed, but try not to make the pieces any wet. Test your model color on a spare piece of paper first. If you apply the correct color with only one wash.

TYPE OF GLUE—To seal the fold, needs you need glue with with 60-100% water resistance and a pH of 7.0-8.0. All these are very marks PVA or UHU glue (see below) 100-100.

SCORING—Scoring is very important if you are to make an accurate model. It makes the paper fold easily and smoothly along the fold line. A cut will penetrate into the cut or 1/8" in the sharp point of a compass. Make regular scoring lines. Score every 1/8" you use a new

THERE ARE TWO WAYS OF FOLDING THE PARTS



A DOTTED LINE INDICATES A MOUNTAIN FOLD

A SOLID LINE INDICATES A VALLEY FOLD

ORDER OF WORKING

1. Cut out the pieces for the model, one at a time keeping well away from the outline.
2. Score along all score lines.
3. Cut out precisely along the thick outline and any areas marked "cut out".
4. Carefully fold along all fold lines and crease firmly.
5. Be careful not to confuse valley folds with outlines indicating tabs—these have a number on them.

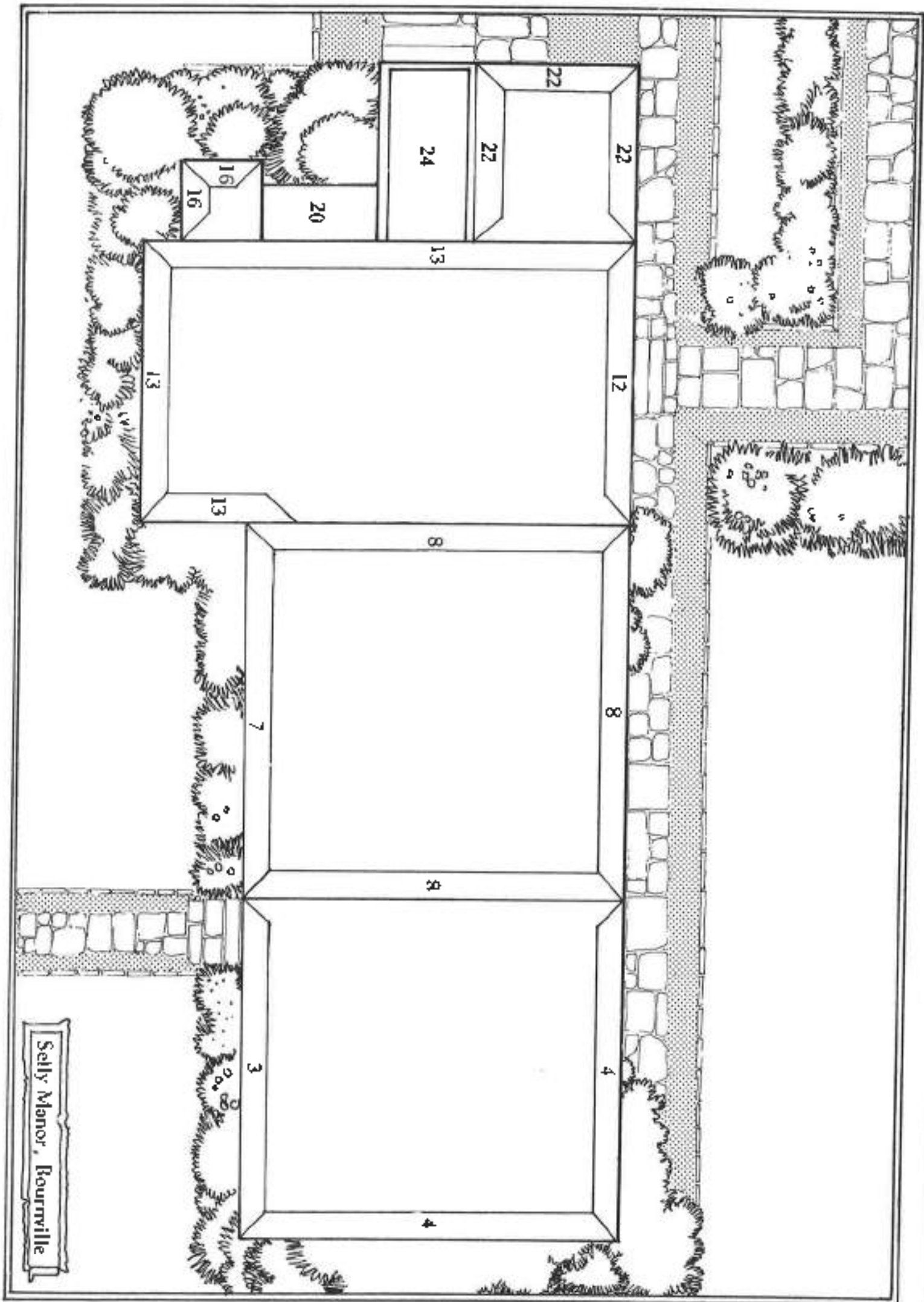


BOURNVILLE

CONSTRUCT-A-KIT **Selly Manor**

BOURNVILLE

Contains full instructions on how to build your very own Selly Manor



Selby Manor, Bourneville

